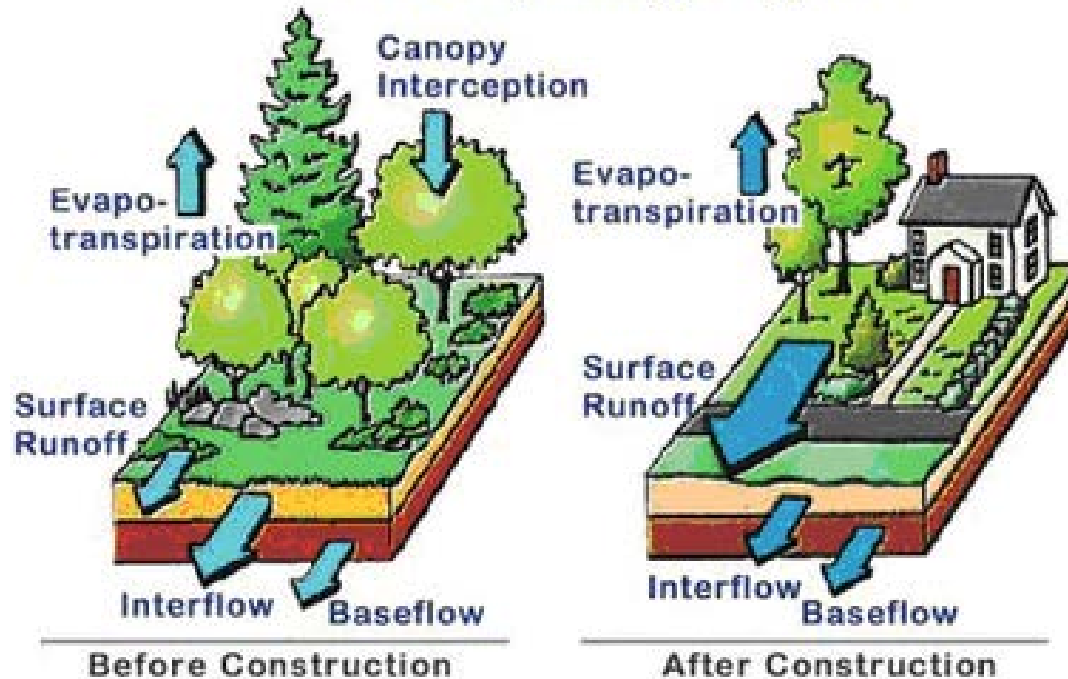


Storm Water Defined

Water Quantity

Local Hydrologic Cycle



Storm Water and Sanitary Sewers

Storm Sewers:

Storm Sewers collect Storm Water by means of **Storm Drains** and flows overland in ditches and channels. Storm water is piped to ponds, rivers and streams. The water in storm water pipes often contain many pollutants and is not safe for drinking.

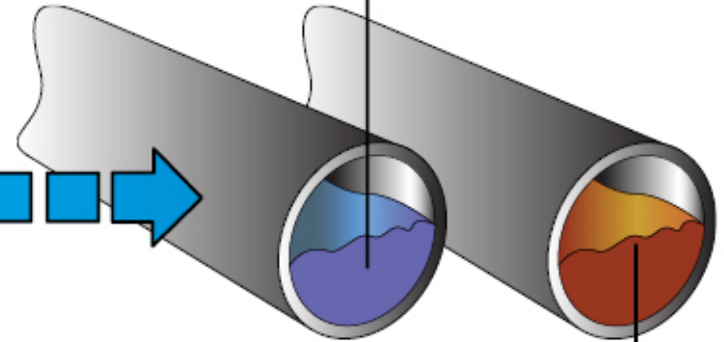
Storm Drains:



Curb Inlets



Catch Basins



Storm Drains:

Common storm drains are curb inlets and catch basins. These structures function as “drains” for storm water. The stormwater collected by storm drains flows into the **Storm Sewers**.

Sanitary Sewers:

Sanitary Sewers collect and transport all of the waste water from businesses and homes to waste water treatment facilities. Sanitary sewers transport the water from sinks, bathtubs, toilets and drains located inside of homes and businesses.

Purpose of Franklin County and Township Storm Water Program

- Compliance with Ohio Environmental Protection Agency NPDES municipal storm water permit.
- Share resources and expertise by co-permitting.
- Water quality and stream corridor protection.



Franklin County and Township Storm Water Program Participants

- Franklin County Townships
- Franklin County Drainage Engineer
- Franklin County Economic Development and Planning
- Franklin County Sanitary Engineer
- Franklin County Public Health
- Franklin Soil and Water Conservation District
- Residents and businesses in unincorporated Franklin County
- Developers , contractors and consultants working in unincorporated Franklin County



**Franklin Soil and Water
Conservation District**

Creating Conservation Solutions for Over 60 Years

Franklin County and Township Storm Water Community Benefits

- Public health
- Drinking water
- Recreation
- Wildlife
- Reduced infrastructure costs
- Quality of life



**Franklin Soil and Water
Conservation District**
Creating Conservation Solutions for Over 60 Years

Storm Water Permit Requirements

- Public education
- Public involvement
- Construction site runoff
- Post construction site management
- Good housekeeping/pollution prevention
- Illicit discharge detection and elimination



Report Pollution!

- **Failing Household Sewage Treatment Systems**

Franklin County Public Health

(614) 525-HSTS (4787) or failingHSTS@franklincountyohio.gov

- **Report Emergency Spills**

Ohio EPA 24-Hour Emergency Hotline

1 (800) 282-9378

- **Report any other water pollution related complaint or concern to:**

Franklin Soil and Water Conservation District

(614) 486-9613



**Franklin Soil and Water
Conservation District**

Creating Conservation Solutions for Over 60 Years

What are the Public Health Risks?

- Untreated or improperly treated sewage can contaminate:
 - drinking water supply
 - drainage ditches
 - streams, rivers and lakes
- When household sewage treatment systems fail, untreated sewage is discharged into the environment.

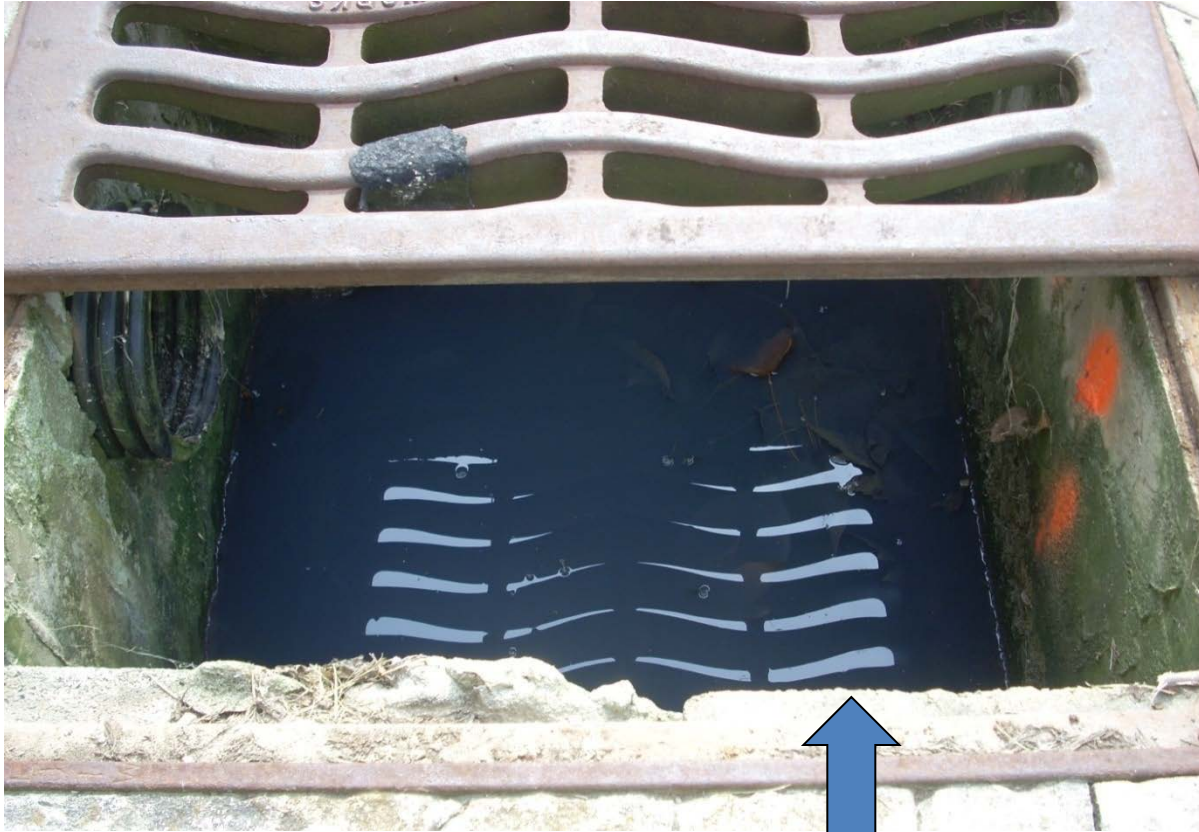
Avoid Exposure

- Do not allow kids and pets to play in water that looks and smells like sewage.
- Do not swallow or get water from ditches or streams in your mouth or nose.
- If you are in those types of areas, wash hands thoroughly with soap and water.





Human waste



Untreated sewage in catch basin storm sewer